

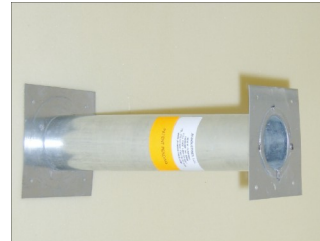


JV-INDUSTRIES, Ltd.

ADJUSTABLE WALL SLEEVES/ SPLIT WALL SLEEVE

The Adjustable Wall Sleeve is for providing penetration through concrete or drywall walls. It is installed prior to the pouring of concrete into the wood form. Similar to the standard deck sleeve, with mounting bases at each end and a telescoping adjustment at the center. Ample overlap is allowed at the slip joint to maintain shape and strength when the concrete is being poured.

PATENT PENDING



The Split Wall Sleeve is for providing penetration through walls. It is installed after the pouring of concrete into the wood form. Similar to the standard deck sleeve, with mounting bases at each end and a telescoping adjustment at the center. Ample overlap is allowed at the slip joint to maintain shape and strength. This sleeve is for retrofitting existing walls.



ADJUSTABLE WALL SLEEVE SIZES

Diameter	Length
3" to 15:	6" to 15"

NOTE:

All custom sizes are available in (diameter & adjustable length). Adjustable sleeve should have a minimum of a 4" overlap to ensure stability.