
JV-INDUSTRIES, LLC.

MISCELLANIOUS

JV-Aerator Box this box is used for plumbing and electric pipes through a concrete slab. The unique design of the box allows for the necessary work space for piping etc. The box is available in a variety of dimensions.



JV-Aerator Can is a sheet metal box that is used for a block-out in the slab for passage of pipes of different sizes. The box is completely filled with mineral wool insulation. This block-out box is made to any size. Manufactured of 24 gauge material, with 8 lb insulation.

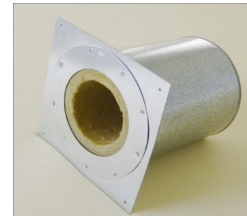


JV-Insulated Deck Sleeve is the same as our regular deck sleeve with 1" of mineral wool insulation to suit the size of the pipe.

It also has a retaining ring to hold the insulation within the sleeve.

Made to your specifications.

PATENT PENDING



JV-Multi-can is our newest product. This Multi-can system saves time and space in constricted areas.

ONLY ONE INSTALLATION COST!

PATENT PENDING

