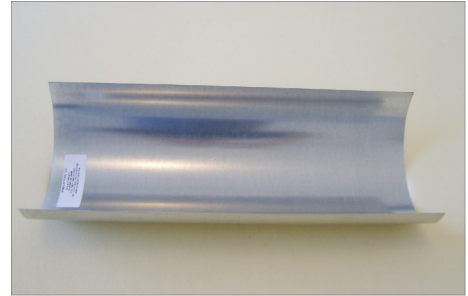
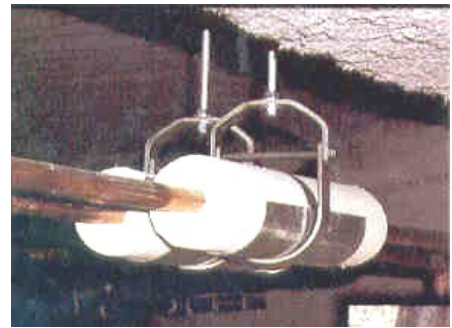

JV-INDUSTRIES, LLC.

JV-PIPE SADDLE

Pipe Saddles are used as a support for the pipe as well as protecting the pipe insulation. . They are manufactured using a heavier gauge galvanized material (18 or 20 gauge) and have a 180 degree radius. Standard lengths for pipe saddles range from 9” to 12”. Custom radii, gauges and lengths are available.



For more information on JV-calcium pipe shields, see page 12.



PIPE SADDLE STANDARD SIZES

Diameter	Length	Gauge
3” to 14”	6” to 18 “	20 Gauge
3” to 14”	12” to 18”	18 Gauge