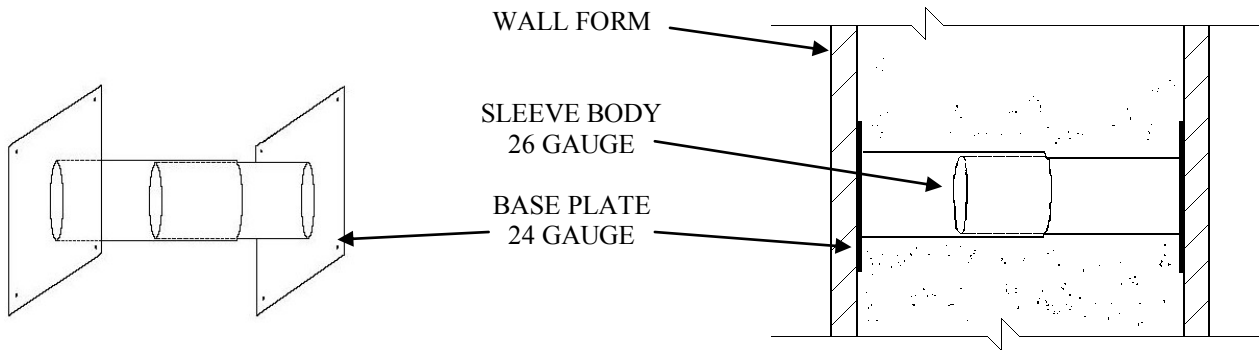

JV-INDUSTRIES, LLC.

ADJUSTABLE WALL SLEEVE FOR CONCRETE WALL PENETRATION

PATENT PENDING

ISOMETRIC VIEW

SIDE VIEW



NOTES:

CUSTOM SIZES AVAILABLE (DIAMETER x ADJUSTABLE LENGTH)
ADJUSTABLE SLEEVE SHOULD HAVE A MINIMUM OF 4" OVERLAP
TO ENSURE SLEEVE STABILITY.